

# 缓存管理器

演讲人:张文君  
金山网络



# 缓存管理器的客户

本地文件系统

网络重定向器

网络文件服务

过滤驱动

# 和其它组件的配合

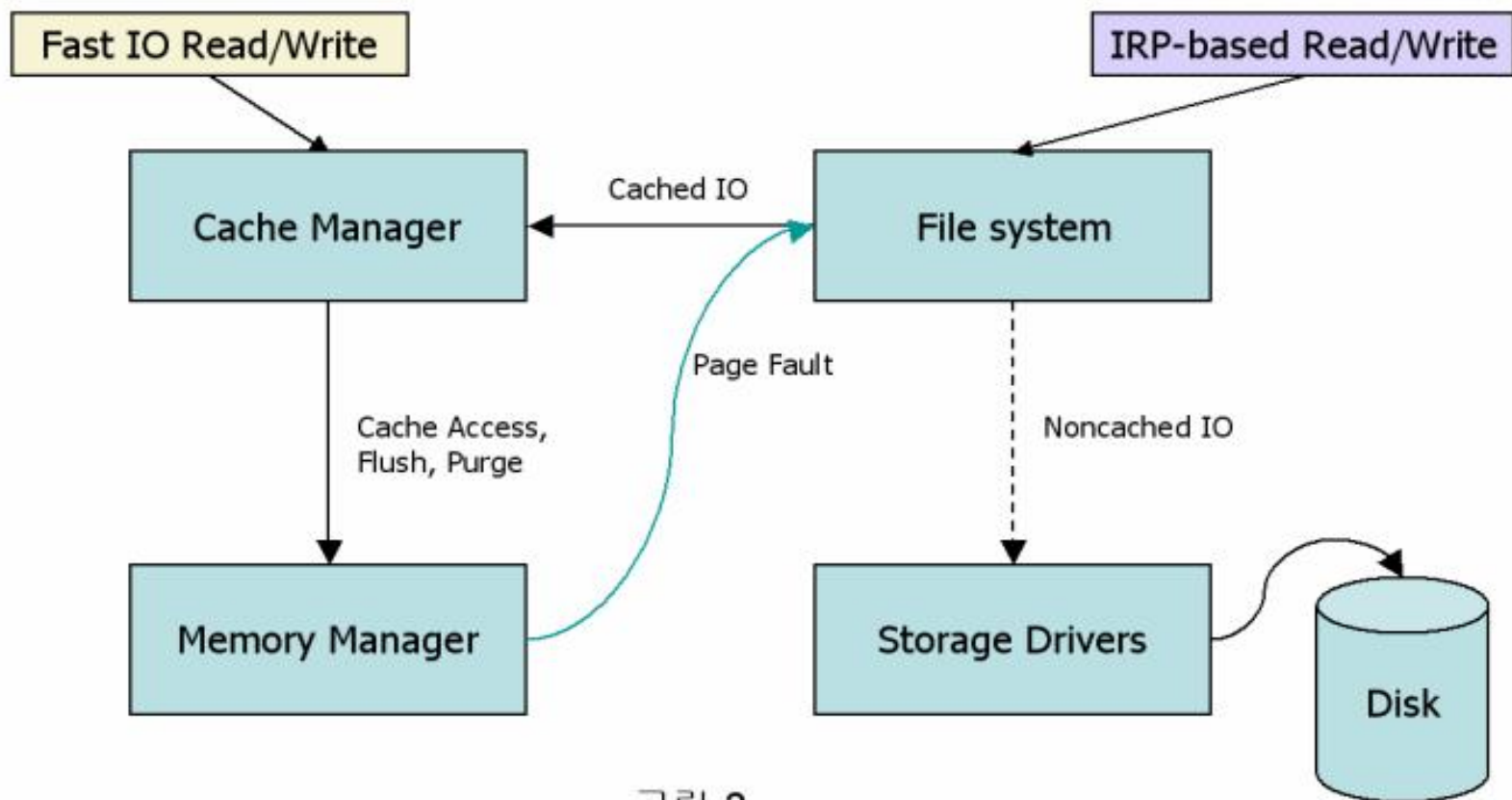
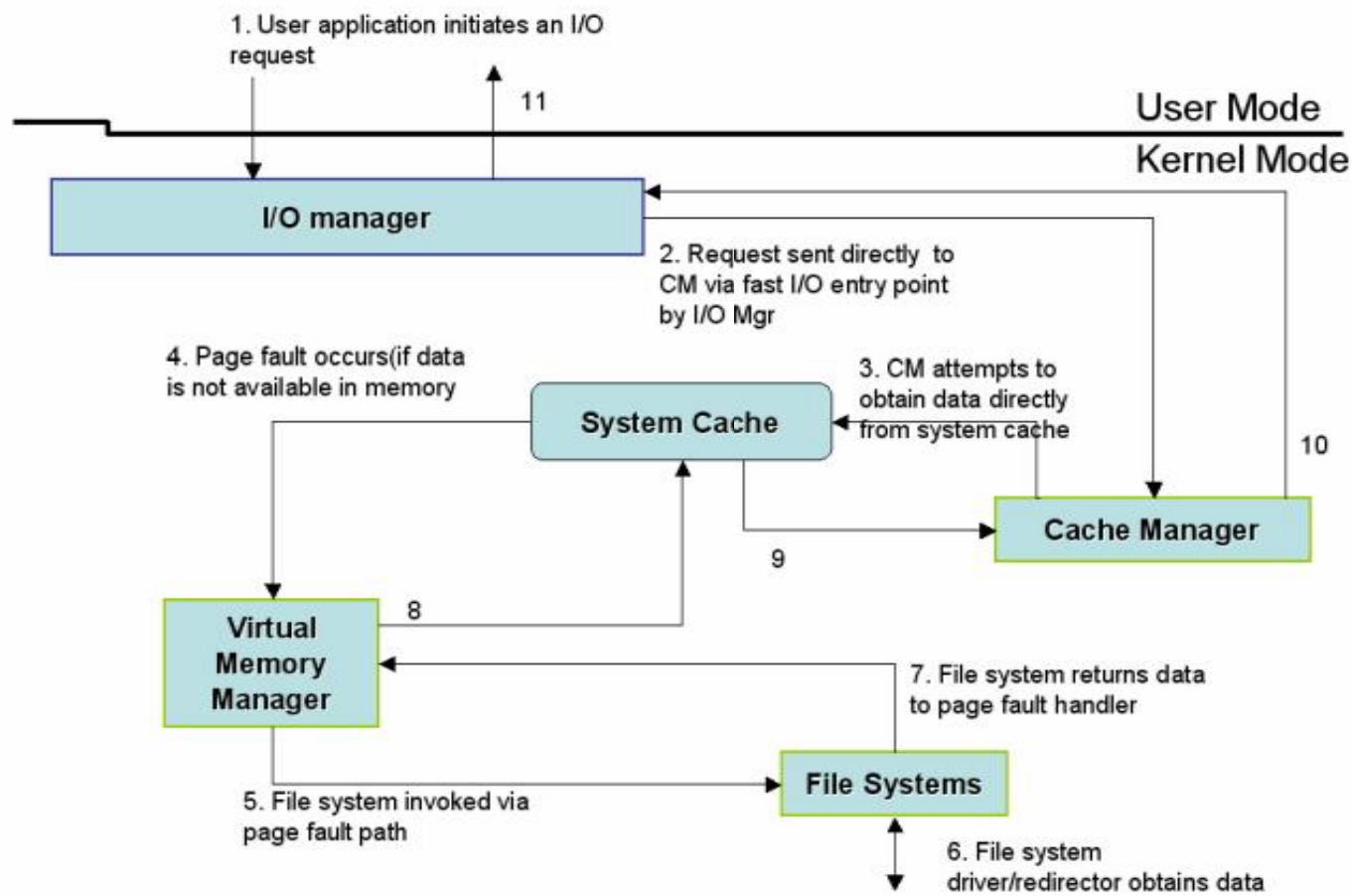


그림-2

# Request的完成



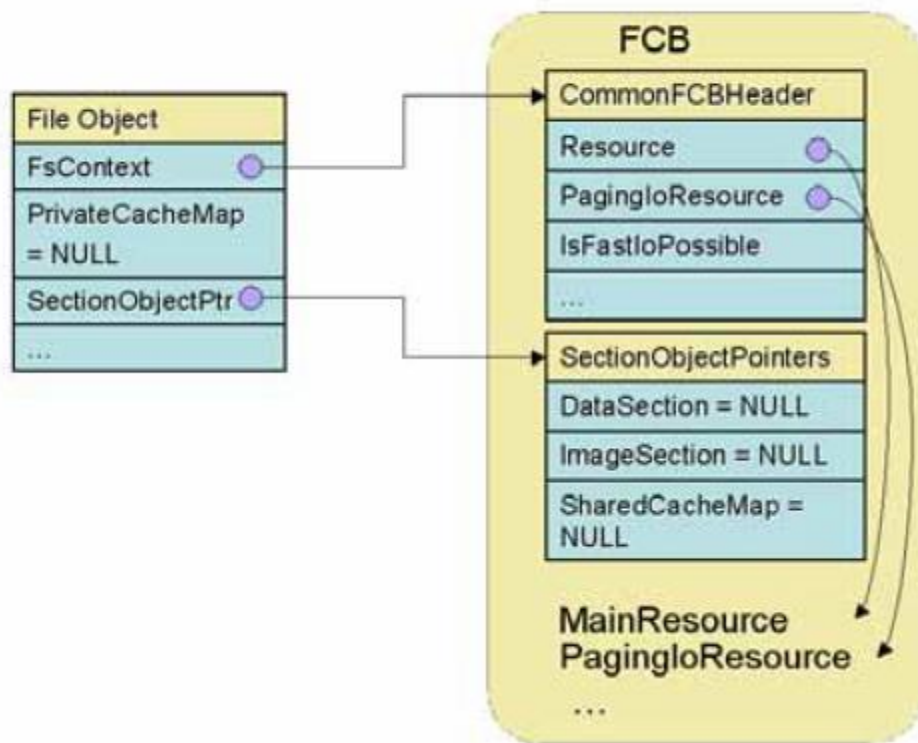
# 重要的数据结构(1)

FsContext : `_FSRTL_COMMON_FCB_HEADER`

SectionObjectPointer

PrivateCacheMap

VACB



# 重要的数据结构(2)

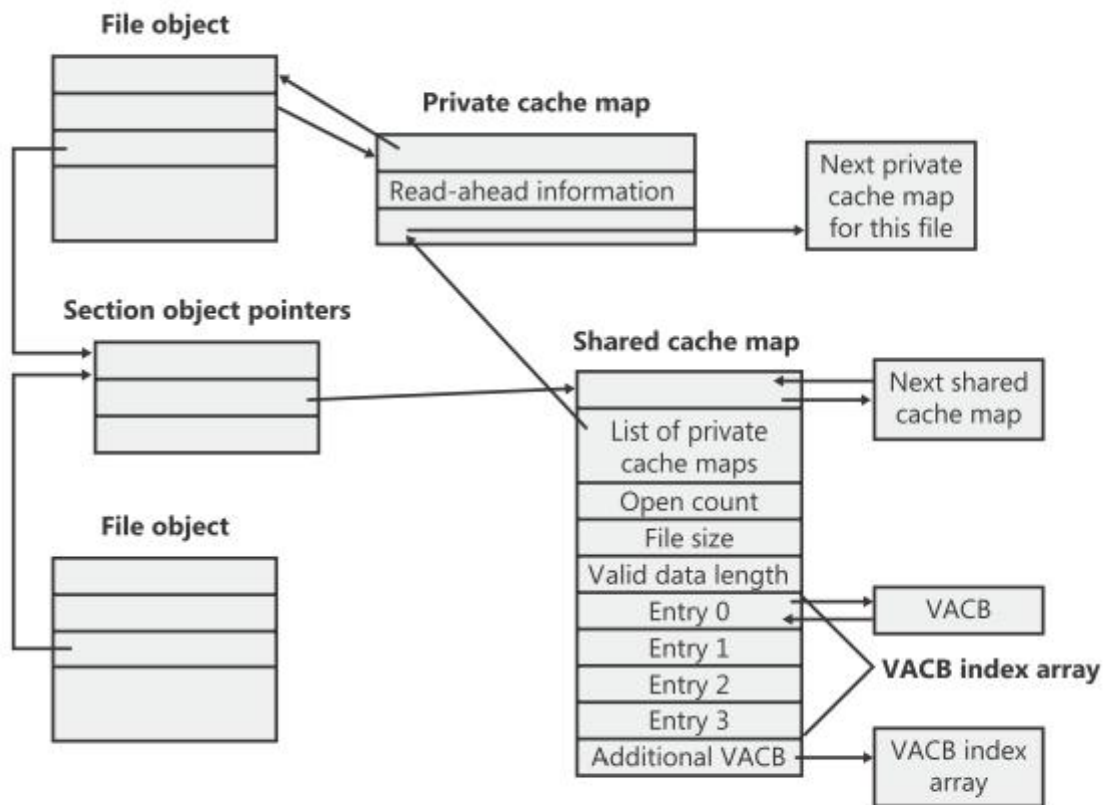


Figure 11-10 Per-file cache data structures

# 重要的数据结构(3)

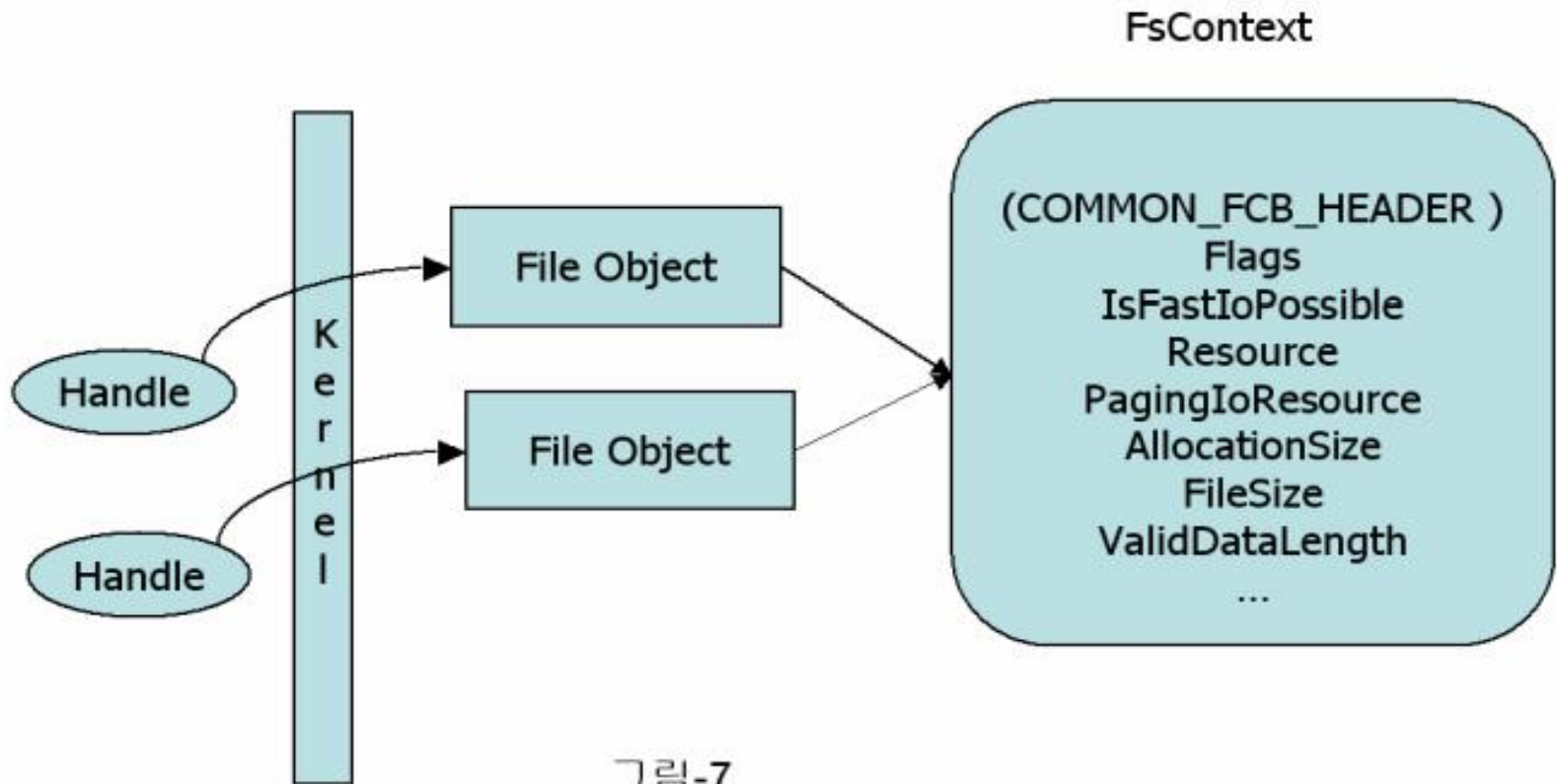
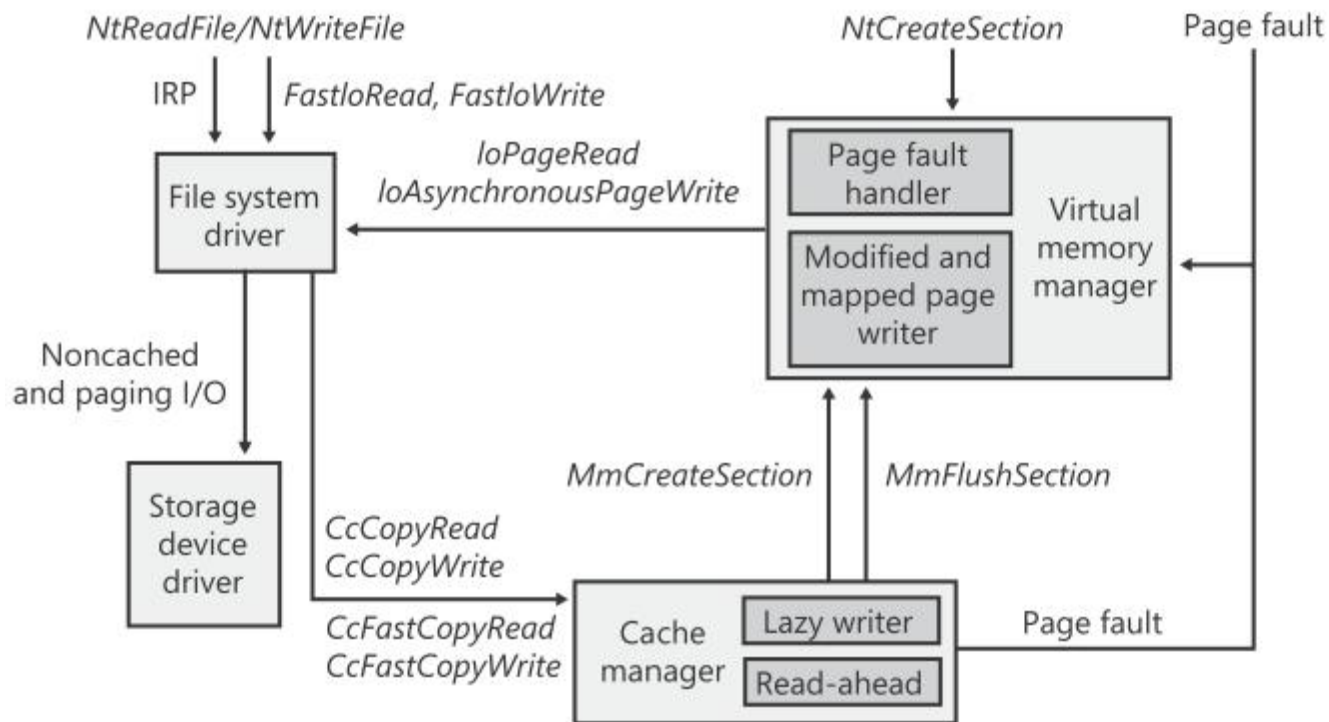


그림-7



**Figure 11-13** File system interaction with cache and memory managers



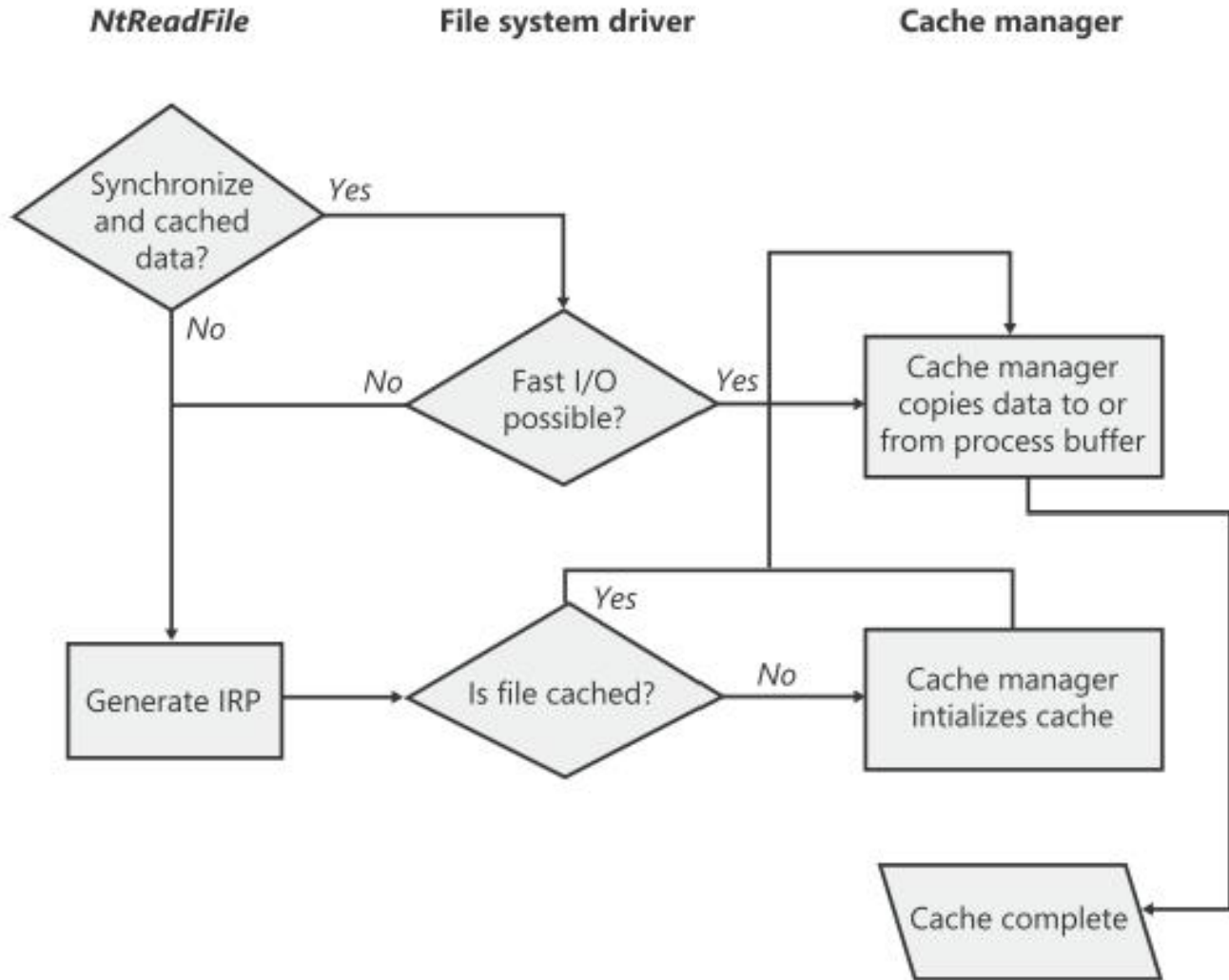
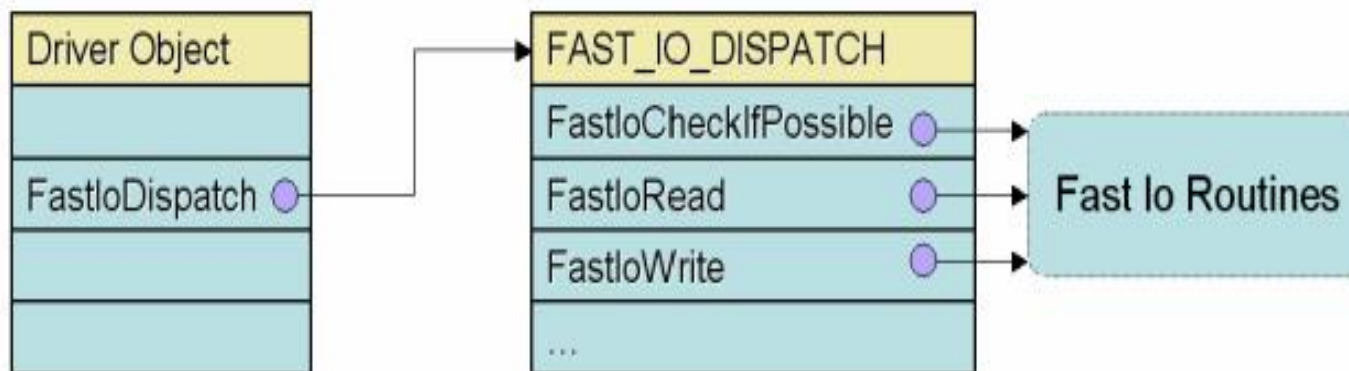


Figure 11-14 Fast I/O decision tree

# FastIo-分发



# 预读和滞后写

- 两个标记:
- FILE\_FLAG\_RANDOM\_ACCESS :禁用
- FILE\_FLAG\_SEQUENTIAL\_SCAN :顺序



# 感谢观赏

与中国的软件产业共同进步!